

**Music Example for Speed Lesson #56**  
**Developing the Weak Hand - Part 7**

S  
W

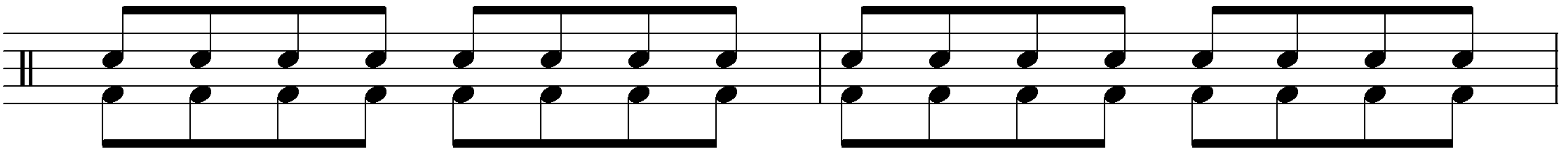
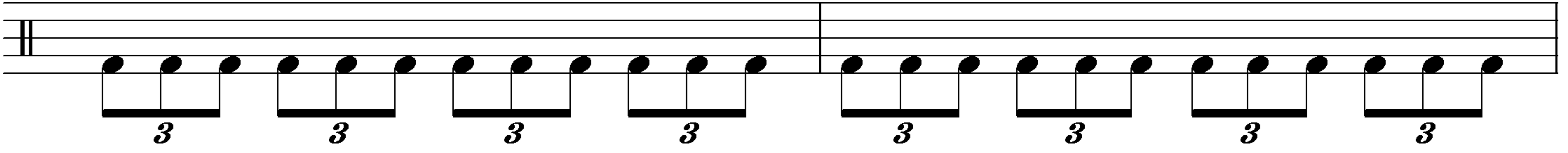
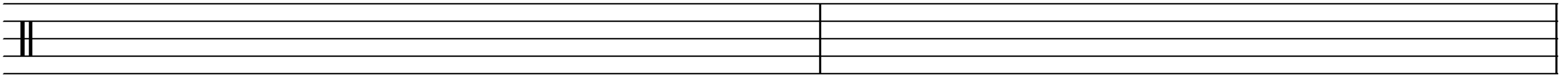
4/4

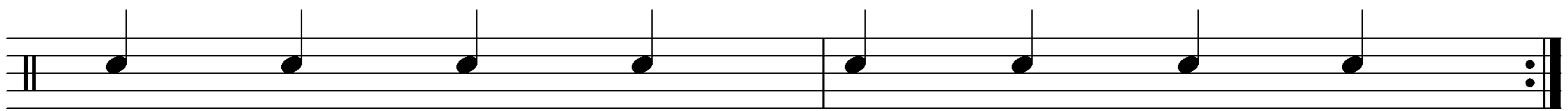
S  
W

S  
W

**PRACTICE KEY**  
**S = STRONG HAND**  
**W = WEAK HAND**

Copyright by TigerMix.com, Inc.





### **Practice Key**

**#1 = Play SD part with hands and BD part with feet. Follow written sticking for both**

**#2 = Reverse written sticking and start on the left hand and left foot**

**Copyright by TigerMix.com, Inc.**